

AC RELAYS

AC TRIP INDICATION RELAYS

AC VOLTAGE RELAYS

The E-MAX ATR and ACV Relays are the AC equivalents of the industry standard E-MAX TIR Trip Indication Relays and AVR Auxiliary Voltage Relays. While the TIR and AVR Relays are designed for use in DC trip circuits, the ATR and ACV are designed for use in AC trip circuits. The relay outputs may be used to record breaker, relay, communication and control system operations, and to activate alarm and/or annunciator contacts. Relays do not require standby power to operate; they are powered by their inputs.

Types ATR and ATR-D detect AC current in power system trip circuits. Types ACV and ACV-D detect AC voltages. Type ATR and ACV are designed for switching AC loads; Type ATR-D and Type ACV-D are for switching DC loads. The entire line of ATR and ACV relays are solid state with inputs designed to withstand overloads to ensure safe operation. The relay cases are molded of rugged glass-filled polycarbonate having high dielectric strength with rigid terminal studs for ease in mounting and connection. The relays are isolated from the mounting surface to over 2500 Vrms.

SPECIFICATIONS

Response Time: 5 msec maximum
Burden: less than 0.5 VA

Part No.	Model	Rating	Minimum Operating	Output Switch	
				V Max	I Max
731A010	ATR	1 Amp	80%	250 Vac rms	1 Amp*
731A020	ATR	2 Amp	80%	250 Vac rms	1 Amp*
731A050	ATR	5 Amp	80%	120 Vac rms	1 Amp*
731A510	ATR-D	1 Amp	80%	125 Vdc	1 Amp
731A520	ATR-D	2 Amp	80%	125 Vdc	1 Amp
731A550	ATR-D	5 Amp	80%	125 Vdc	1 Amp
879A010	ACV	120 Vac	80%	250 Vac rms	1 Amp*
879A020	ACV	220 Vac	80%	250 Vac rms	1 Amp*
879A510	ACV-D	120 Vac	80%	125 Vdc	1 Amp
879A520	ACV-D	220 Vac	80%	125 Vdc	1 Amp

Operating Temperature: 0° to 80° C
 Storage Temperature: -54° to 85° C
 Altitude Range: 0 to 50,000 feet

Life Expectancy: 1 x 10⁶ Operations Minimum
 Weight: 14 oz maximum
 Cycling Rate: 60 cps maximum

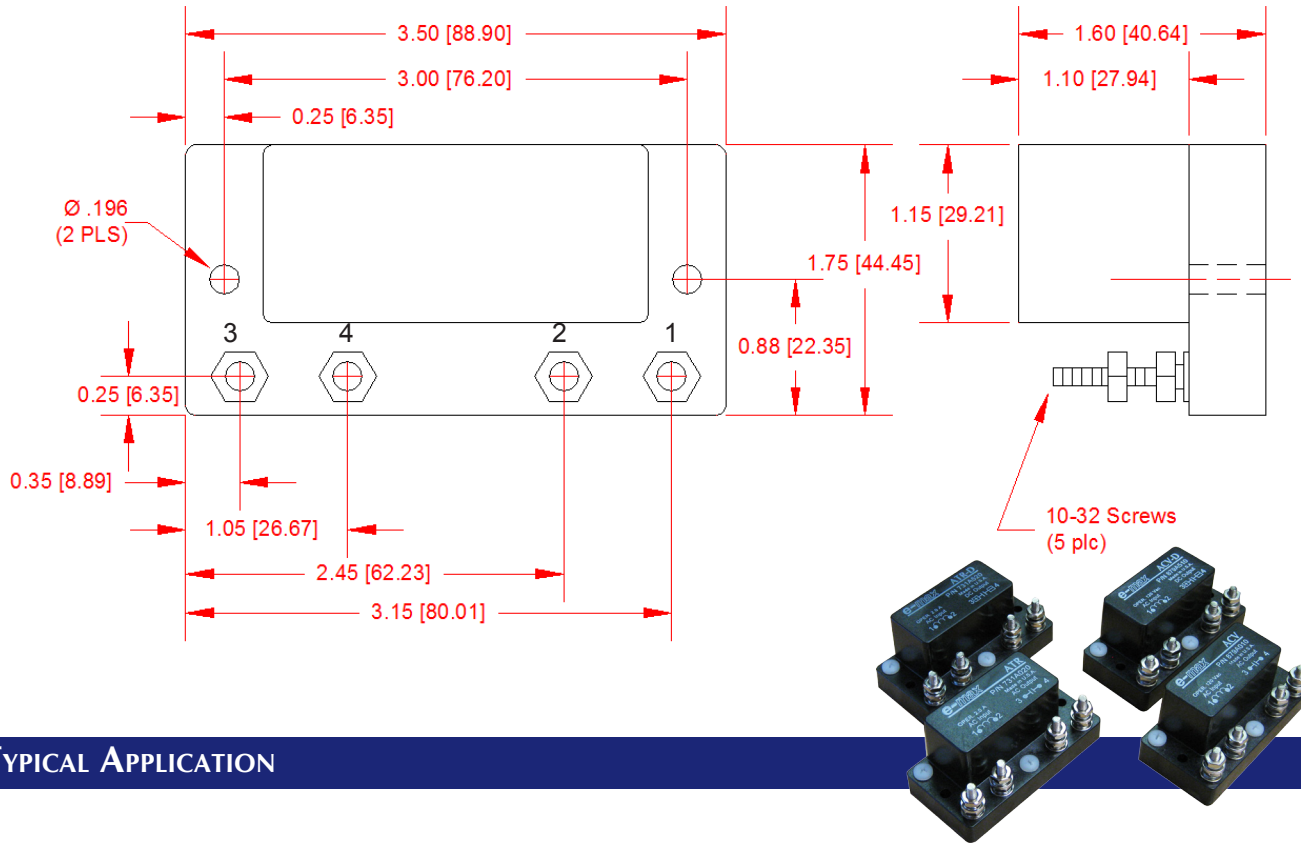
Moisture Resistance: 95% Relative Humidity

* Derate Above 60° C

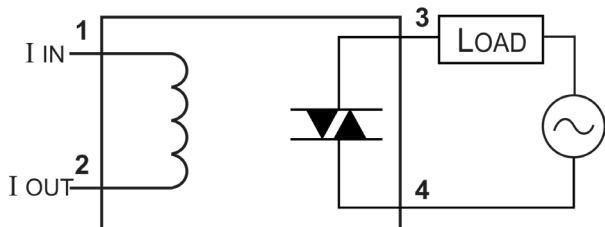
E-MAX AC Relays are RoHS Compliant

The substances banned under RoHS are lead (Pb), mercury (Hg), cadmium (Cd), hexavalent chromium (CrVI), polybrominated biphenyls (PBB) and polybrominated diphenyl ethers (PBDE).

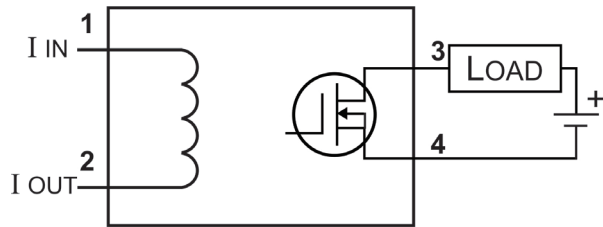
DIMENSIONS



TYPICAL APPLICATION



AC Output



DC Output

ACCESSORIES

DIN Rail Mounting Kit - Snap-on / Snap/Off Rail Clips

P/N 632A050



Each kit contains two screws and mounting clips.

Attach the clips to the relay using the standard relay mounting holes and the included screws. Then snap relay onto the rail.

