



# CT

## CURRENT TRANSFORMER



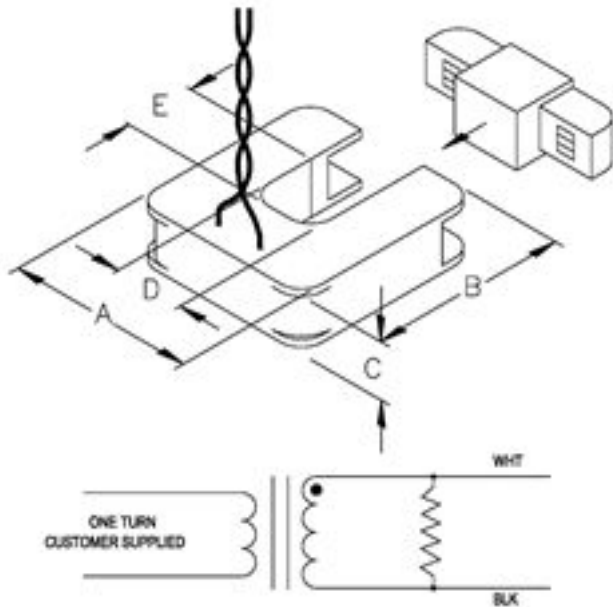
- High Reliability
- High Input Impedance
- Snap-on Installation

The split-core current transformers are easily installed with the snap on design.

---

- Output is 0.333 V rated current
- Internal precision burden resistor across secondary.
- Models (-000) available with no burden resistor. Clamped to 22 V peak. Current ratio 7500:1
- 8 ft twisted pair leads.
- Epoxy encapsulated housing.
- Accuracy is measured from 10% to 130% of rated current.
- No exposed metal parts on assembled transformer.
- Shrouded core blades for protection during installation.
- Core interleaved at joints for accuracy.
- Phase angle is measured at 50% of rated current.
- Snap closing/opening feature.
- Accuracy + 1%.
- Phase angle  $<2^\circ$

**DIMENSION**



A	2.00
B	2.10
C	0.61
D	0.75
E	0.75

**DIMENSION**

Part No.	Model	Rating
036B211	Current Transformer	5 Amp
036B212	Current Transformer	15 Amp
036B213	Current Transformer	100 Amp